



Jack Waghorn International



Specialists in clean and high tech machinery installation and removal

Moving's our Game

Specialist machinery movers for data centres, pharmaceuticals, food and drink and other high technology companies for whom cleanliness, safety and quality are paramount.

Whatever your needs for machinery or equipment moving, installation or removal, Jack Waghorn International are able to offer an extensive range of expert service.

If you want someone who understands the needs for:

- Precision working
- Cleanliness
- Good housekeeping
- Health and safety
- High training standards
- Advance planning and organisation

You should talk to us.

Not only do we supply the basic “lift and shift” services you would expect, our services also include:

- Haulage
- Storage
- CDM Project management
- Electrical connections
- IT programming
- Mechanical connections
- Process pipework
- Export packaging and documentation
- Worldwide freight

“Others might say, ‘it can’t be done’. At JWI we say, ‘it can.’”

Front cover: Tandem crane lift of a tank, turning it from horizontal to vertical prior to installation at a water purification plant

LIFT and SHIFT Services

- Assembly and dismantling
- Crane lifts
- Crane appointed persons
- Forklift trucks and qualified operators
- Slinger/signallers
- Risk assessments and method statements
- Precision levelling

Our Expertise

With our 'can do' approach and extensive experience we consistently complete projects that others say can't be done. Developing innovative solutions to complicated problems, we excel at delivering:

- Safely / cleanly
- On time
- On budget

Our People

Our skilled and helpful staff are the key to delivering the results you want. Our staff are well qualified, highly trained and know that we care about their career development, so that the only thing they need to worry about is getting the job done just as you want it.

Quality

SAFE CONTRACTOR APPROVED and CERTIFIED TO ISO9001 our systems and processes are constantly audited to ensure that we deliver the customer service which our customers demand and that continuous improvement is made to our service, quality management and health and safety.

Market Sectors

JWI specialises in the installation and movement of machinery for clients across a broad range of market sectors; all of which require cleanliness, precision, safety and quality of service.

- Data centres
- Pharmaceuticals
- Universities
- Food and drink
- Aerospace and Defence
- Hospital and medical
- Clean rooms
- Water purification
- High Tech plant and machinery



Assembling a large machine tool in a working aerospace factory with restricted height and working space.

Installing an MRI scanner via very limited access to the 7th floor of St Thomas' Hospital, London.



Many of our clients' businesses are international, so ours is too.

Our Moving and Installation Experience

Our clients come from many industries including:

- Data centres
- Pharmaceutical equipment
- Pharmaceutical production
- Hospitals and Universities
- Industrial Cleansing Systems
- Clean Rooms
- Security controls and gates
- Factory relocations
- Washing and Disinfecting systems
- Air Handling
- Water purification
- Automated storage systems
- Environmental waste disposal
- Tanks and vessels
- Dairies
- Food and Drink
- High tech machine tools
- Boilers and steam generators
- Modular construction systems

Working nationally and worldwide

Throughout the UK (we have teams in several different locations) and worldwide. Our clients' businesses are international so ours is too. We can collect machinery abroad and bring it to the UK for installation. We can dismantle and mark machinery here, pack it and ship it around the world for you. We can go abroad and perform an entire machinery installation for you.

We carry worldwide insurance (war zones etc excluded) and can arrange marine insurance as necessary. British health and safety standards are widely valued everywhere and can easily be integrated with local rules and procedures. Equipment can be hired locally or specialist equipment can be brought from the UK. Our employees can carry out the entire machinery installation project or we can supervise local workers or your own in-house staff.





“All involved within your organisation has the ‘Nothing is a problem’ attitude...”



What our clients have to say:

“I would just like to take a moment to thank the guys from JWI who assisted Bouygues in the cabin move this weekend. There were a lot of hours put in between BYES & JWI and together it was a great achievement. Please pass on our thanks & appreciation to the guys who came to one of our Data Centre sites, in particular your supervisor who I am told was the drive behind the determination to succeed. Thanks again.”

Bouygues E&S Contracting Ltd

– Zoe Hamer, Project Director

“Very pleased with the 1st class service received from Gez and Steve at JWI with the handling, loading at our depot and offloading at the clients premises of 2 x LTHW / carbon dioxide vaporisation skid units for Nippon Gases UK. The guys were patient, polite and professional through all stages of the task a pleasure to deal with throughout.”

Nippon Gases UK Ltd – Dave Charlton,
Project & Maintenance Engineer

“We have achieved the major milestone of installing the 18 bottling vats in the new tank farm for BHS 1&2, despite a few hiccups and using a shoehorn, many thanks to all concerned for their efforts in making this possible in good time and to programme.”

Briggs of Burton – Installing bulk storage vessels in a major bottling facility expansion

“I just wanted to drop you a quick note to say it was an absolute pleasure working with you and your team on this project. The team on site led by Nigel was amazing. Their professional approach to unloading the equipment and moving it into the clean room was great to see. Your team made, what I expected to be a stressful couple of weeks, a relatively easy delivery. The teamwork and communication within your team and with the wider team was excellent. I have worked with several different equipment moving companies over the years, and I can safely say you are one of the best I have ever worked with. I would be pleased to recommend Jack Waghorn International to anyone and I hope we can work together in the future.”

GSK

“I would like to say a big thank you to you and your team for your assistance in moving and positioning two AHU’s. The operation was completed in a safe and timely manner and now I feel like a weight has been lifted off my shoulders in getting the units into position thanks.”

TClarke – Grant Hare, Supervisor

Data Centre Project In Germany

We have just completed our latest Data Centre project in Frankfurt which was planned and implemented quickly, safely and on time.

The client approached JWJ to arrange the offloading and installation of Excool EIC units at a new data centre in Frankfurt. The client needed us to deal with tight access conditions. The existence of water/fuel tanks underground meant the crane could not be positioned in the ideal, closest location to the installation position. They needed us to make an opening by removing the building facade and replace it as well as designing the lifting method and positioning the units in what were very restricted final positions.

JWJ turned everything round in a month, making a site visit to Frankfurt after which we were able to save the client money by designing a specialist lifting frame (also made by our workshop within that same month) which meant that they did not need to build scaffolds at two different openings into the building. Using our existing German contacts we organised other specialist equipment in Germany as well as bringing the lifting frame and other equipment out from the UK.

This picture shows our team using tracking plate to spread the load while skating across the open grating floor.



“We were delighted with JWJ’s safe working approach, their speed of response, their ability to think outside the box and save us money, such as with the lifting frame they designed specially to fit the EIC units. These installations had a number of complex features, the restricted access, tight working conditions, need to coordinate with other trades on site and JWJ fulfilled all our needs and more. We will be delighted to be working with JWJ again on future stages of our Frankfurt data centre projects and elsewhere.”

Darren Penny – Senior Project Manager

Data Centre Project In London Area

JWI had a great day offloading and locating the first of 7no E-houses to their final positions for our client at a site in West London. The E-houses weighing approximately 16000kgs had to be offloaded outside onto the generator plinth and then skated off the plinth onto the steel gantry, before a change of direction to skate them along the gantry steels and to their final position alongside each other. This has completed this phase of the project with 24no E-houses located into their final positions over the past twelve months.

“Simply outstanding, top job, efficient team.”



Major Bottling Facility Expansion

Project Scope for Bottling Facility

The scope of works included the following:

- Relocation of 12no Disgorging Tanks, Plate Heat Exchangers, Product Filters, Chillers, Air Receivers and Compressors from Diageo Kilmarnock to Diageo Leven and the re-installation of the same at the Bottling Facility.
- Offloading and positioning of 18no 50m³ Bottling Vats.
- Collection, transportation, offloading, positioning and access gantry assembly for 12no 90m³ and 33 160m³ Product Storage Vessels.
- Collection, transportation, offloading, positioning and access gantry assembly for 28no 50m³ Product Storage Vessels.
- Offloading and positioning of new Product Skids, Chiller Plant, Heat Exchangers, Valve matrices, Glycol Tanks, MCC Panels.



“I was impressed with the professionalism with which your company handled itself. From getting the paperwork in on time to arriving on site at the agreed time, completing the work to everybody’s satisfaction and leaving the site in the same state that they found it in. Even when there were complications with vessels that didn’t fit into the structure the team worked together to overcome the issues and get a solution. I would be more than happy to recommend and use Jack Waghorn International again.”

Diageo Supply – *Installing bulk storage vessels in a major bottling facility expansion*

Equipment installation solution

Following receipt of the tender request JWJ attended site to complete a comprehensive review of the job scope and began to develop the quote based upon the available information at the time.

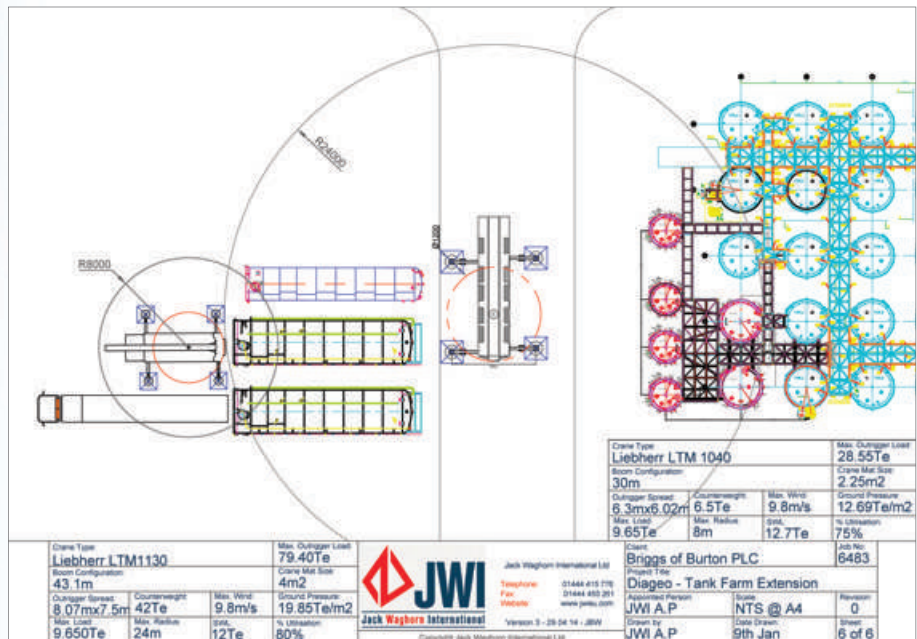
After an extensive program of meetings with the client, main contractor and consultant engineers to develop the installation program, lift plans and method statements JWJ were awarded the contract just 4 weeks after the tender enquiry was issued.

There were a number of site specific issues that required careful management. Amongst these were issues relating to the fact that the works were to be completed on both existing sites and those that were still under construction. This required good communication between JWJ, the client, consultant and main contractor to ensure that all parties were aware of the relevant activities and the impact these had on each other.

Every element of the scope of works was designed, managed and implemented to the highest standards meeting all site specific and industry wide standards including contract lift planning & provision, haulage, specialist lifting and installation, GMP standards and ATEX Zone working.

Result and client benefits

JWJ were able to work closely with their client and client representatives to deliver an on-time, on-budget solution to the challenges presented by both the fluid installation program and the on-site constraints over a period of 18 months.



High Tech Machinery Relocation

Project scope for high tech machinery relocation

Our client conducted a detailed informal tender process to select suppliers to move its manufacturing and quality control equipment (including milling machines) for its high performance engines to a new purpose-built plant in a nearby location. Pre-planning would be crucial to avoid disruption to production during the international motor racing season. Coordination would be essential as the move would involve not only the end user and representatives of all the machinery manufacturers but also eight other sub-contractors working on the move ranging from civil engineers to computer technicians.

Relocation Solution

The acceptance of our tender saw the really detailed planning begin. During a six month preparatory stage there were regular, sometimes weekly planning, coordination and health and safety meetings. GANTT charts flew between the participants often changing on a day to day basis to ensure the technical aspects went to plan.

These technical aspects for us, as the lift and shift contractor included:

- Coordination with manufacturers agents and engineers to decommission the equipment at the old sites and to lock the moving parts so as to avoid damage while they were being moved
- Designing and supplying lifting rigs including EN8 steel bars to deal with the heavy loads involved (the rigs used on the original installation were mostly unavailable so replacement fell to us)
- Avoiding any of the delicate precision equipment getting wet or even damp, while conducting the move over a typical British 6 month period
- Ensuring there was no damage to the equipment from vibration during the move including using air ride suspension transporters
- Being aware of cost where possible so having our own trained personnel use the client's in situ crane to position lighter equipment up to 16 tons (and using lifting bars from the original installation where available) after arranging up to date certification
- Plating the flooring in the new building to ensure preformed voids could be skated over as we moved equipment in to its designated new positions.

Result and Client Benefits

All this was carried out in the knowledge that the machines had to work first time to their correct tolerances once they were started up. And they did.



“Job went very well, very impressed with the service.”



MMM Medical Equipment UK Ltd

University of Cambridge

Jack Waghorn International Ltd have continued to support the NHS and life science clients throughout the Coronavirus pandemic.

We took delivery of a 5000kg Vakulab PL Autoclave chamber at the University of Cambridge as part of their Project Hadar refurbishment. The chamber was delivered on a HIAB in a very tight road at the rear of the university. We rigged the machine and lifted it off and landed it onto skates. It was skated across the uneven road, up a ramp and through the tight double doors. Once inside, the chamber was manoeuvred through the building approximately 20 meters avoiding several pinch points.

The A-Frames were erected over the pit and JWJ rotated the chamber through its horizontal axis 90 degrees with a 5mm clearance. The chamber was placed into its final position in the pit as per the client's instructions.

Jack Waghorn International Ltd carried out this job while under the strict COVID-19 rules of 2-metre distancing.

This was a very challenging project due to the restricted headroom and access with lots of planning and a lot of discussions over the phone and on emails. The RAMS was revised a couple of times to suit site rules and to suit strict COVID-19 rules and regulations, during the national restrictions.

“I would like to thank all involved for their efforts so far and look forward to the successful completion of this project. The facility will be a great addition to the Cambridge Research estate and support shared collaborations.”

University of Cambridge –
Operations Director



Yoghurt Processing Line Refurbishment

There are occasions when we don't have the luxury of being able to take a full machine out and replace it with a new one. On a recent project for a major UK Yoghurt producer this scenario became apparent, presenting the JWI team with many challenges.

Our client was undergoing a major machinery upgrade to improve production, become more efficient and, not to mention, reduce the downtime.

Our client's plant operates 24 hours, 7 days a week meaning there was no quiet window to allow our team to complete the project out of hours.

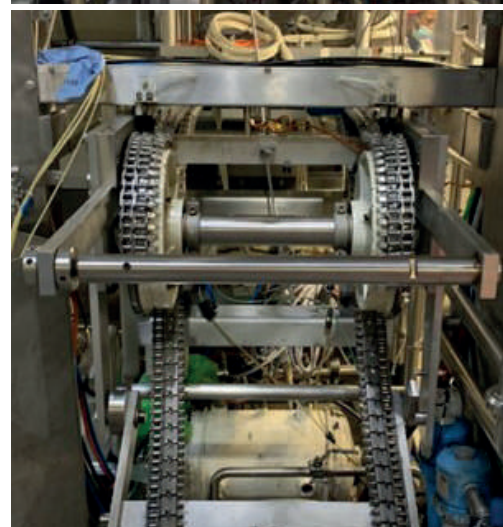
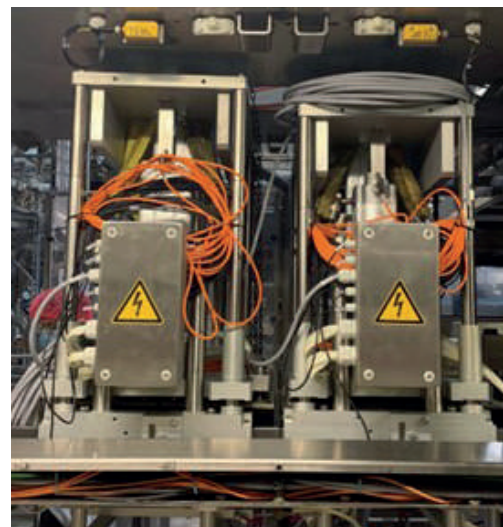
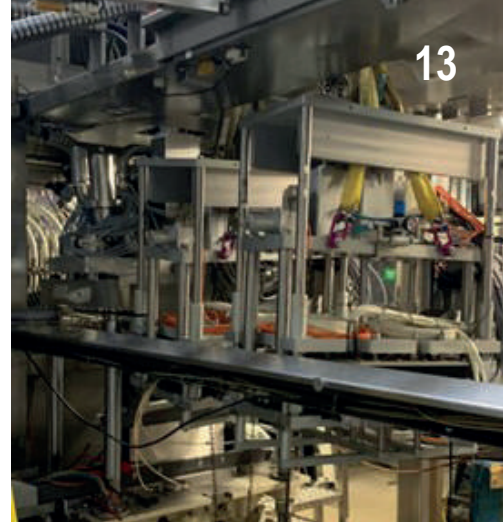
Planning was critical throughout the whole project. JWI's Technical Manager attended site to complete a preliminary survey of the task that needed to be completed and attend meetings with our client and other contractors to ensure nothing was left to chance. In-depth risk assessments and method statements were produced. Due to the tight working space the plant requirements were very specific, every piece of plant needed measuring in all dimensions to ensure it was fit for purpose. Many hours were spent procuring the correct plant for the project.

Once the planning stage was complete it was time to hand the project over to our highly skilled rigging team. With the constant support from the Technical Manager, our team removed several large items from within the machine, weighing up to 1500kg, and then out of the plant.

Our own highly skilled riggers also assisted the machinery manufacturer in materials handling through-out the whole project.

Once all the removal had been completed the even more difficult task of carefully installing the new machinery elements began. Ensuring no damage was critical.

The JWI Health and Safety department carried out an ad-hoc visit on this project to ensure all of our normal high standards were being met, even in the tough environment that the team faced. All the requirements for Health and Safety were met and the project was finished to the highest standard allowing our client to continue with its major improvement plans with minimal disruption to its daily production.



Moving the Impossible

Specialists in installing electrical and cooling equipment for all your projects throughout the UK and Europe



The average machinery moving company has little understanding of the unique requirements of your industry

So what happens when you need them for moves in this specialised area?

You need people you can depend upon to respect the needs of your industry. From specialist floor coverings to live data halls, a heavy mover familiar with your needs makes your project run more smoothly and helps stick to deadlines.

Add to this the challenge of moving equipment through tight corridors, or under low ceilings, and it can be a headache to find a machinery moving company who will keep your project on time and budget, without leaving a trail of mess (and perhaps damage) behind them for you to clear up.

Difficult machine moves are our bread and butter

Jack Waghorn International was originally founded to serve the pharmaceutical and food industries. We've also earned our place working on prestigious projects in data centres across the UK and Europe, aerospace, high performance engine factories and other high-technology industries. This means we are sensitive to the unique requirements of your industry and project.

Tackling jobs they say can't be done

From time to time, a contractor will explain that a job can't be done. Perhaps there's restricted headroom, a narrow opening or a weak floor.

Shown here on the right, a 17-tonne chiller with a crane being rigged in a restricted area.

“I just want to let you know I'm totally impressed about your team on site. Your guys have DONE an absolutely amazing job. I can't find the correct words for this. I gave your guys the measurement by 825mm distance to the plenum wall and they hit it on point. Great!! I am really impressed. Nobody has done that before. I am looking forward to the next job with you.”



“Can we get the panel into the room without removing the door?”

A panel was delivered to a data centre but it would not fit through the door into the switch room.

Utilising our bespoke lifting device, JWI were able to position the panel without the door frame being removed or the panel being redesigned, saving the client time and money.

We understand that deadlines and production schedules mean pressure. So we move your equipment and machinery quickly, precisely and safely.

Speed, care and precision are three of the ways we make a big difference to our customers.

“We were told this job could not be done, until we spoke to Jack Waghorn International.”

Our bespoke 2 tonne SWL panel mover.



Big unit, no access...

Answering a call from one of our longstanding clients operating in the Data Centre sector, JWI were instructed to mobilise to a site in South Wales, providing plant, equipment, transport and labour to undertake 2no. separate contract lift across 2no. sites and transport in between.



Utilising a Demag AC80 crane at the storage location, loading the units and transporting them across to the main lift site.

At the main lift site we utilised the Liebherr LTM1350-6.1 crane to position 11800kg units at a maximum radius of 46m. 130t counter weight and 36.9m main boom + 36m luffing jib.

Our own Technical Manager (A.P.) attended site for a full site survey and designed the lift, producing a full in-depth Risk Assessment and Method Statement.

JWI worked closely with Temporary Work Coordinators to ensure that all the lifts and movements were executed in a safe and correct manner.

We provided a complete managed solution for this project with minimal disruption to other site activities and met every challenge with confidence and experience to navigate our way to the completion of the project to the highest of standards.



“We can't lift from above, we have to go in through the side of the building.”



“Just thought I’d drop a note to say the install is completed and that the team have done a first-rate job. Their attitude to health and safety and consideration to others working in the area was second to none. Please pass our thanks and well done to the teams involved. We are looking at a similar project in Enfield, if successful we will certainly be in touch.”

Merit – Offload and distribute 56 skids and lift for positioning

The machine mover for projects that absolutely, positively, must be completed on time and on budget. No excuses.

For your next project...

As the person in charge, you know the ability to quickly solve problems under pressure sets your best suppliers apart from the ordinary.

That’s exactly what we do.

For your next project, choose Jack Waghorn International, movers of the impossible, to keep you in control of your budget and hitting all your milestones. No sweat.

Clients

- Bouygues E&S Contracting Ltd
- Anord Mardix UK Ltd
- Mercury Engineering GmbH
- Glaxo Smith Kline
- WM Morrisons Supermarkets Plc
- Ulma Packaging Ltd
- Muller UK & Ireland Ltd
- Briggs of Burton Plc
- Starrag UK Ltd
- Nippon Gases UK Ltd
- Dairygold Food Ingredients (UK)
- CGTC Manufacturing Innovation Centre Ltd
- TClarke Contracting Ltd
- JCA Engineering Projects



It's your move next...

To discuss your next project call 01444 415776.

T: 01444 415776

E: sales@jwieu.com

W: www.jwieu.com

“Very easy to work with. Please keep this crew for all our jobs in future. Very professional and full of great ideas to overcome obstacles.”





Contact us now to find out more
T 01444 415776 E sales@jwieu.com

Visit our website
W www.jwieu.com

Jack Waghorn International Ltd

Follow us on LinkedIn